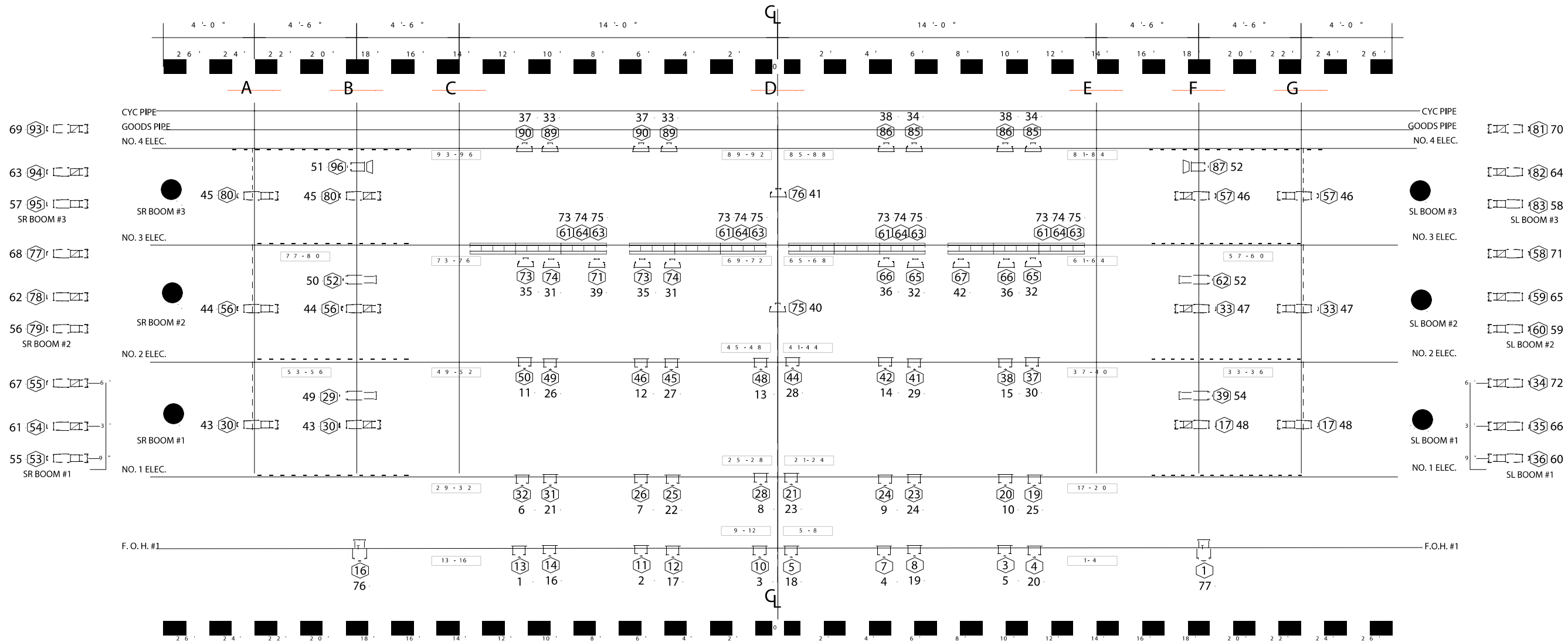


# PAINTED BRIDE ART CENTER

## REP INFORMATION



KEY	
	SOURCE FOUR 50 DEGREE; 575 W
	SOURCE FOUR 36 DEGREE; 575 W
	SOURCE FOUR 26 DEGREE; 575 W
	Altman ERS 6 x 9; 750 W
	SOURCE FOUR PAR; 575 W
	6" Fresnel W/Barndoor; 500 W
	3 Circuit Striplight
	Duvatine Curtain

LEGEND	
	DIMMER CHANNEL
	INSTRUMENT TYPE

**STAGING & BOOTH INFORMATION**  
 28' x 54' Spring Bound Maplewood Dance Floor  
 Full Stage Black Vinyl Marley & Tape  
 Tech Booth: Non-Enclosed Deck Behind Audience Located 40' From Downstage Apron With Operator's Head Located at Approximately 14'

**MASKING & SOFT GOODS INVENTORY**  
 6: Track Mounted 13' x 10' Black Duvatine Legs  
 1: Track Mounted 30' x 13' Black Duvatine US Traveler  
 6: Pipe Mounted 12' x 6' Masking Curtains (On Up/Down Pipes)  
 1: 14' x 48' Seamless Off-White Muslin Cyclorama

**SURPLUS INVENTORY**  
 4: ETC SOURCE FOUR 50 DEGREE; 575 W  
 4: ETC SOURCE FOUR 36 DEGREE; 575 W  
 1: ETC SOURCE FOUR 26 DEGREE; 575 W  
 4: Altman 6" Fresnel; 500 W

PLEASE FILL IN YOUR LIGHTING NEEDS AND RETURN THIS FORM VIA MAIL, FAX OR E-MAIL TO:

TECHNICAL DIRECTOR  
 PAINTED BRIDE ART CENTER  
 230 VINE STREET  
 PHILADELPHIA, PA 19106

FAX - 215.925.7402

E-MAIL - ANDREA@PAINTEDBRIDE.ORG

QUESTIONS/COMMENTS - 215.925.9914 X 11